



**HYDRO  
IMPULSE**

# Revolutionary Impeller Naval Drive System

[hydroimpulse.com](http://hydroimpulse.com)

An underwater photograph showing a shark swimming near the surface of the water. The shark is visible as a dark, elongated shape just below the sunlit surface, with its dorsal fin and tail visible. The water is a deep blue, and the surface is characterized by ripples and reflections of light.

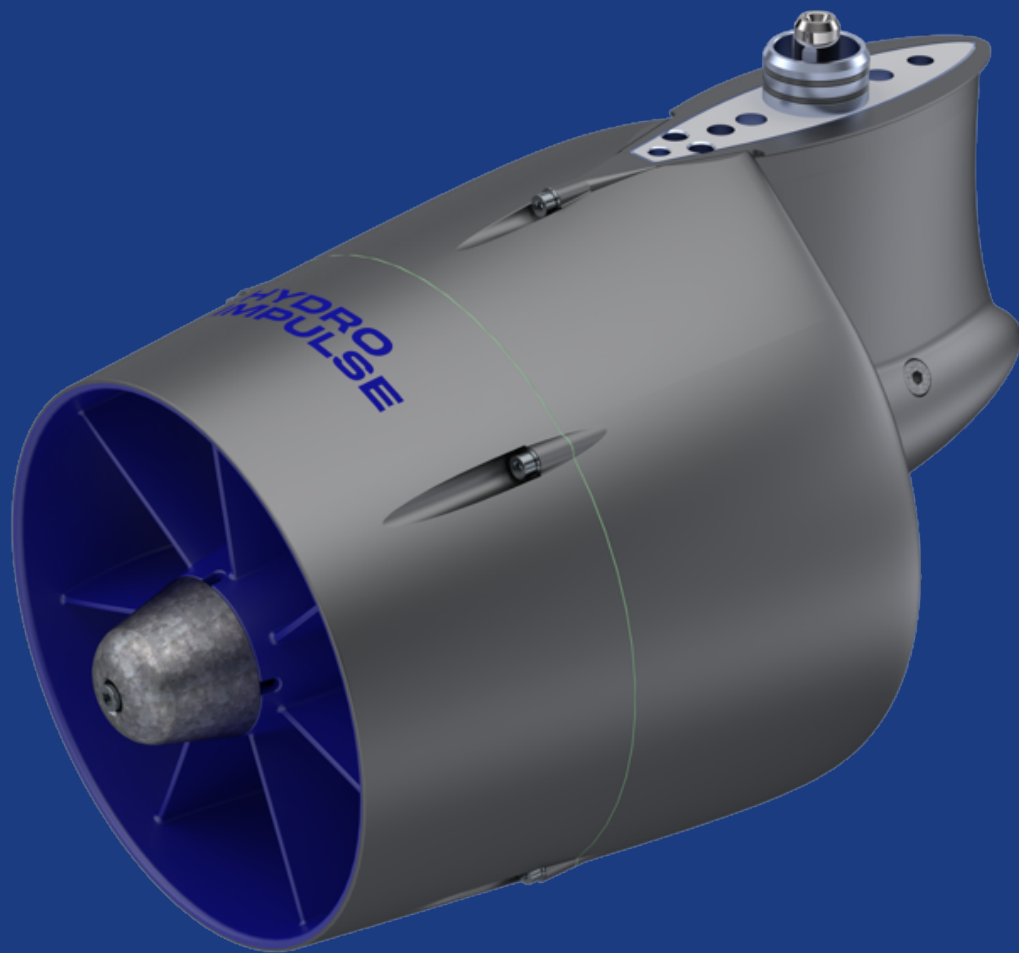
Changing life  
on and under water.

We improve life on and under water -  
for people, the environment and the maritime ecosystem.

Our technology exceeds the efficiency of conventional systems  
by a double-digit percentage, contributes significantly to the climate goals  
of the International Maritime Organization (IMO), reduces noise and vibrations  
and promotes sustainable movement on the water.

We solve the problems through intelligence and technology  
so that abandonment and bans are not necessary.

Hydro Impulse offers the best solutions  
to make the maritime sector fit for climate change.



## Double-digit improvements in efficiency, and more! At least 15% reduction in energy consumption.

Reduces CAPEX and OPEX

---

Compatible with all drive systems:

- \* outboards, stern-, pod- and shaft-drives
  - \* electric and combustion
- 

New build or retrofit

---

Minimizes underwater radiated noise

---

Drastically reduces the risk of serious injury

---



## HI-RF 11 mitek

The HI-RF 11 mitek boosts efficiency, thrust, and speed of the Mitek MO 15 compared to traditional propellers. It's an easy swap and enhances safety for both family and environment.

---

Mitek MO 15

\* Power (cont.): 10.5 kW

\* Voltage: 48 V

\* Weight: 49 kg

\* Tested Propeller: 9.25 x 12"

---

Test results\*

Speed:

Static thrust:

Propeller

17,5 kn

116 kg

HI-RF 11 mitek

17.8 kn (+2%)

187 kg (+61%)

---

The HI-RF 11 mitek achieves the speed of a speed propeller, provides 30% more thrust than a thrust-oriented propeller, and allows safe planing.

This makes the overall package more cost-effective than comparable higher-powered motors.

---

Learn more at [www.hydroimpulse.com](http://www.hydroimpulse.com).

---

\* Tests were carried out with a 3.5 m long aluminum RIB.





Reliable in all conditions!

## Hydro Impulse Lower Unit



From 50 kW to 450 kW, up to 35 knots

---

Interface on the lower unit:

- \* for outboards from most manufacturers
  - \* for electric and combustion outboards
- 

New build or retrofit

---

Drastically reduces the risk of serious injury

---

Incredible acceleration and maneuverability

---



## Hydro Impulse Shaft



From 50 kW to > 1 MW, up to 35 knots

---

Compatible with combustion engines,  
electric motors, and hybrid systems

---

Optimized for maximum efficiency  
to reduce CapEx and OpEx

---

Rugged design for extended durability

---

Minimizes underwater radiated noise

---

# Award-Winning

electric & hybrid marine  
Awards 2023

Environmental Achievement  
of the Year -  
Propulsion System Design





Reinventing  
maritime mobility.

Hydro Impulse Systems GmbH  
Brückenkopfgasse 1/6  
Graz, Austria

+43 664 88 65 8360  
[contact@hydroimpulse.com](mailto:contact@hydroimpulse.com)  
[hydroimpulse.com](http://hydroimpulse.com)

